

Hybrid Storage Solution with AWS Storage Gateway

André Vidigal
Solutions Architect
tecRacer

AWS
User Groups



About Me

- André Vidigal
- In IT field since 2017!
- AWS Cloud consultant on tecRacer since 2022
- AWS Journey around the same time
- Last AWS service I worked on...

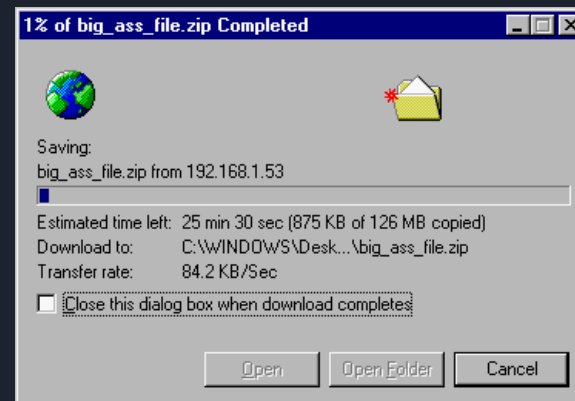


The Problem

THE GOOD, THE BAD AND THE UGLY

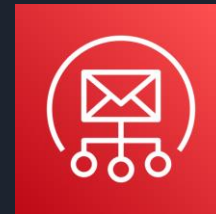
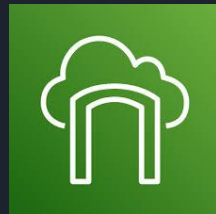
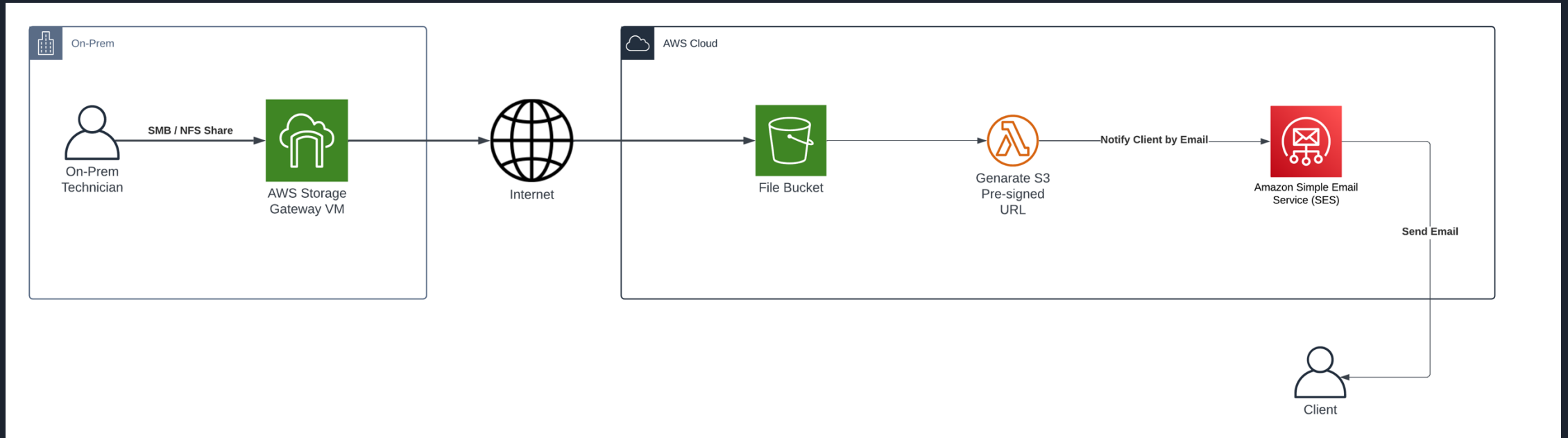
"We need to store our big files somewhere and allow our clients to download them"

- Storage issues
- Uploading speeds
- Notify over email



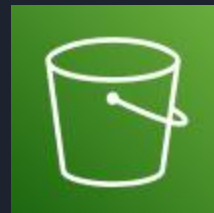
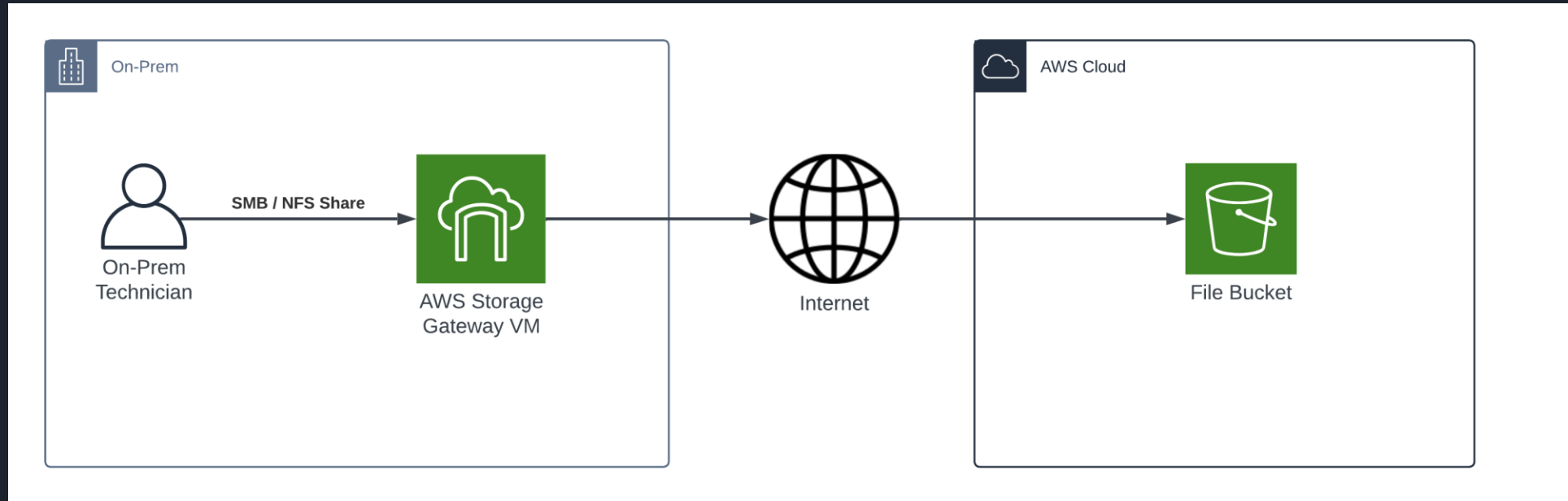
The Solution

TIME TO ARCHITECT



The Storage Part

EXTEND YOUR ON-PREM STORAGE



The Storage Part

EXTEND YOUR ON-PREM STORAGE

Gateway options [Info](#)

Gateway type

- ☒ **Amazon S3 File Gateway**
Store and access objects in Amazon S3 from NFS or SMB file data with local caching.



- ☐ **Amazon FSx File Gateway**
Access fully managed file shares in Amazon FSx for Windows File Server using SMB.



- ☐ **Tape Gateway**
Store virtual tapes in Amazon S3 using iSCSI-VTL, and store archived tapes in Amazon S3 Glacier Flexible Retrieval or Amazon S3 Glacier Deep Archive.



- ☐ **Volume Gateway**
Store and access iSCSI block storage volumes in Amazon S3.



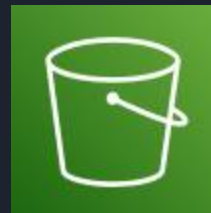
The Storage Part

EXTEND YOUR ON-PREM STORAGE

Platform options [Info](#)

Host platform

- ☒ VMware ESXi
- ☐ Microsoft Hyper-V
- ☐ Linux KVM
- ☐ Amazon EC2
- ☐ Hardware appliance



The Storage Part

EXTEND YOUR ON-PREM STORAGE

Gateway connection options

Connection options

Use the gateway's IP address if it's accessible from your web browser. If the IP address isn't accessible, try using an activation key.

☒ IP address

Your gateway's IP address must be public or accessible from within your current network. Your web browser must be able to connect to this IP address.

IP address

To get the IP address, log into the gateway's local console from your host.

☐ Activation key

Endpoint options [Info](#)

Service endpoint

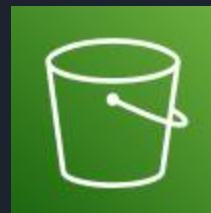
Choose whether the endpoint is publicly accessible or hosted inside your VPC.

☒ Publicly accessible

Your gateway communicates with AWS over the public internet.

☐ VPC hosted

Accessible within your Virtual Private Cloud (VPC) only. Your gateway communicates with AWS through a private connection with your VPC, allowing you to control your network settings.



The Storage Part

EXTEND YOUR ON-PREM STORAGE

Basics

Gateway

UG-11-07 (sgw-35C70D5C) ▼

File share protocol

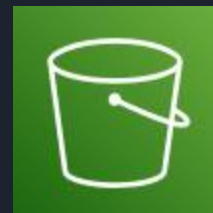
☒ NFS
Standard for Linux environments.

☐ SMB
Standard for Windows environments.

S3 bucket

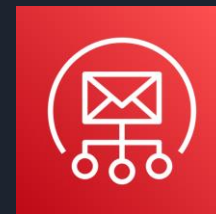
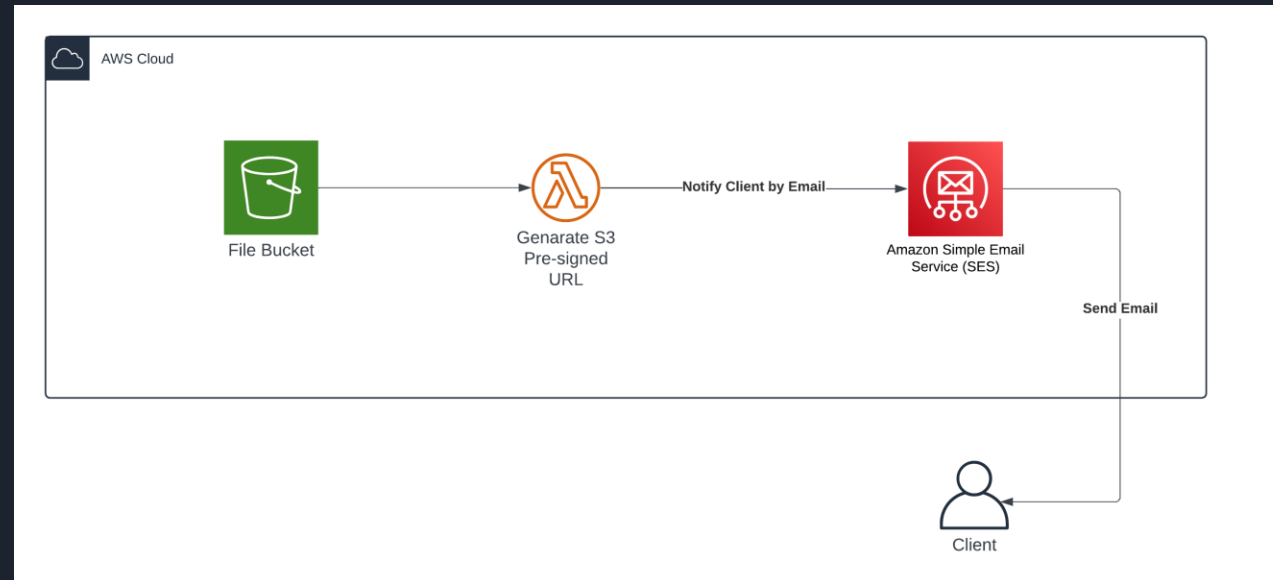
sgw-2024-07-11
7/9/2024 eu-west-1 Versioning Disabled ▼

Create a new S3 bucket



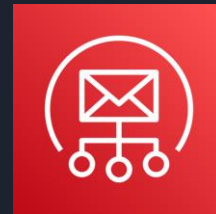
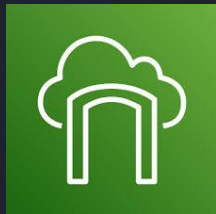
The Sending part

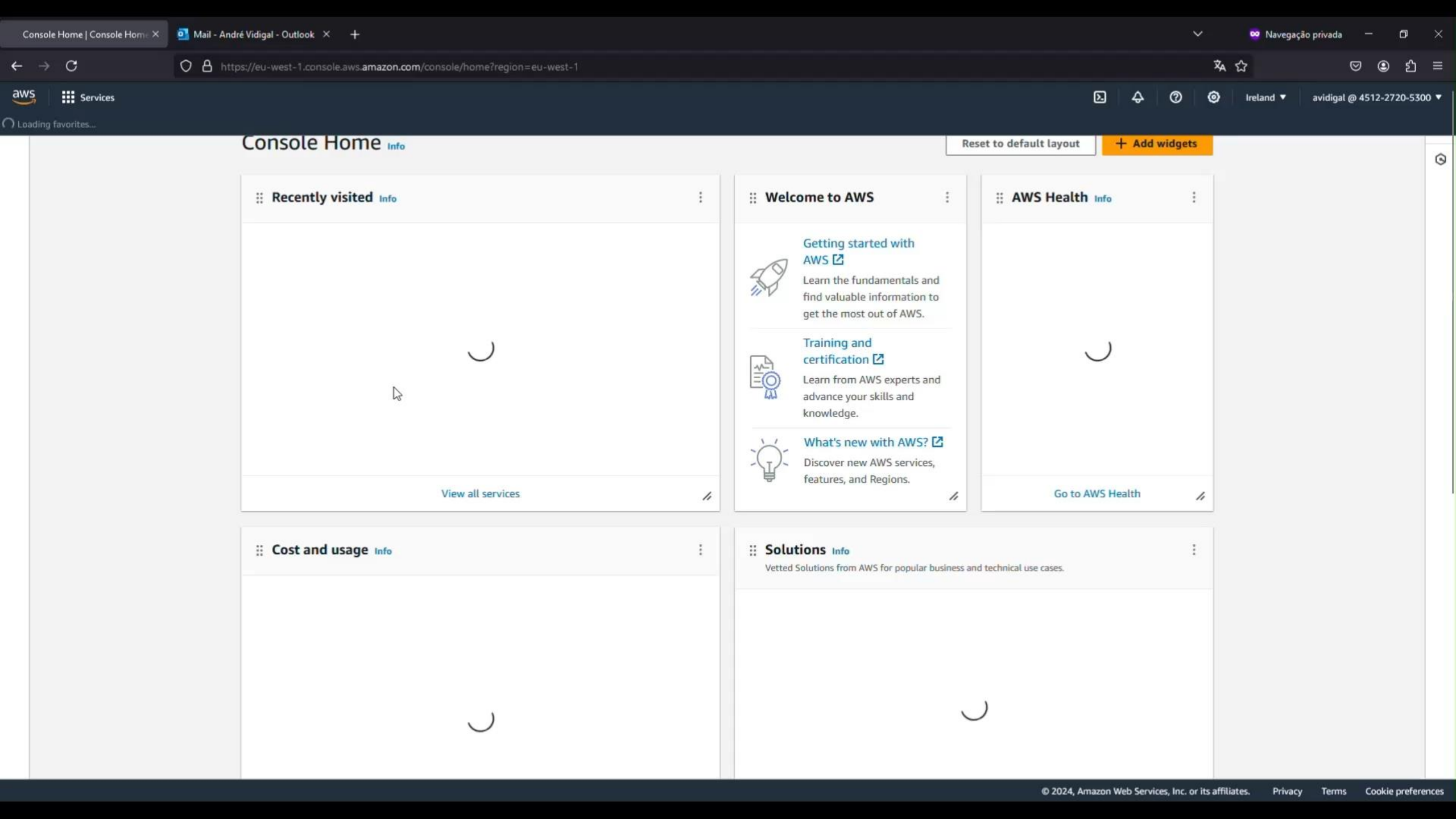
LEVERAGE THE POWER OF SERVERLESS TO SEND FILES EFFORTLESSLY



Lambda Code

Demo – Sending Files with Storage Gateway





Console Home Info

Reset to default layout

+ Add widgets

Recently visited Info



View all services

Welcome to AWS



Getting started with AWS [↗](#)

Learn the fundamentals and find valuable information to get the most out of AWS.



Training and certification [↗](#)

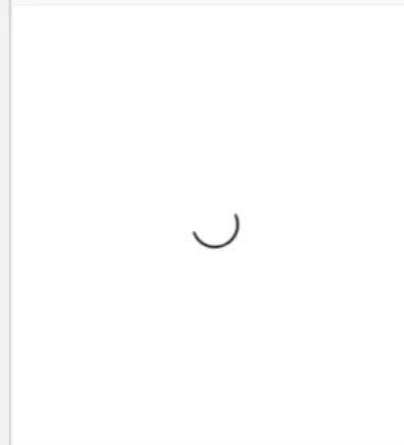
Learn from AWS experts and advance your skills and knowledge.



What's new with AWS? [↗](#)

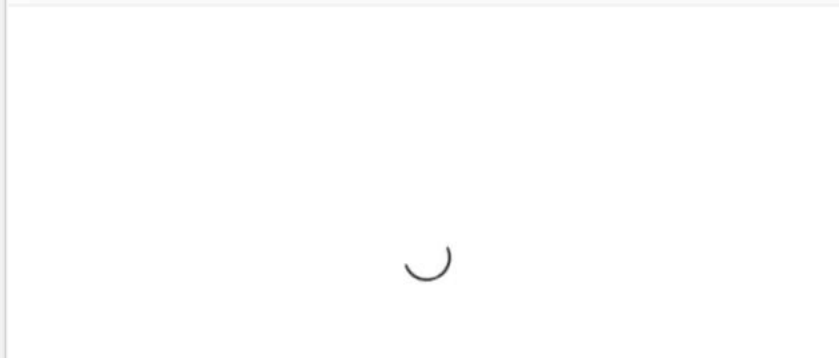
Discover new AWS services, features, and Regions.

AWS Health Info



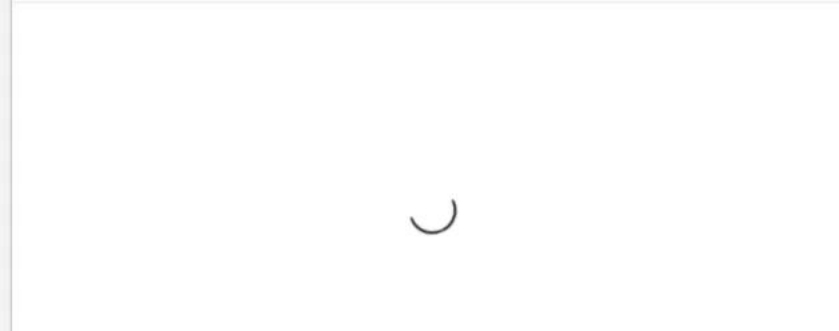
Go to AWS Health

Cost and usage Info



Solutions Info

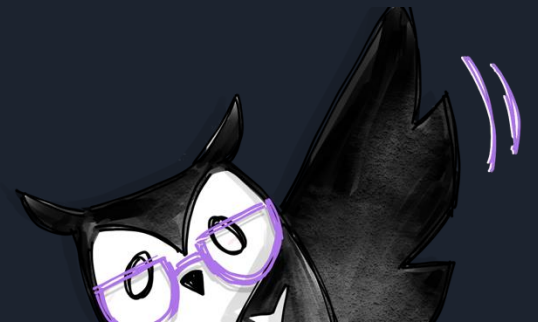
Vetted Solutions from AWS for popular business and technical use cases.



Key Take Aways

WHAT WE LEARNED

- Using the Cloud doesn't have to mean "everything on the Cloud"
- Storage size is just a number ;)
- K.I.S.S – Keep It Simple Stupid!
- Serverless! – Think less about servers



Thank you!

Q&A Time



LinkedIn

